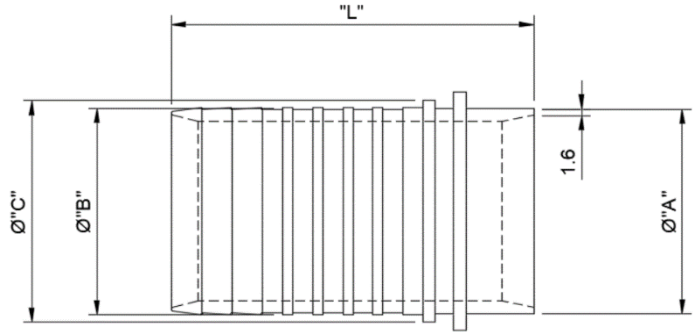
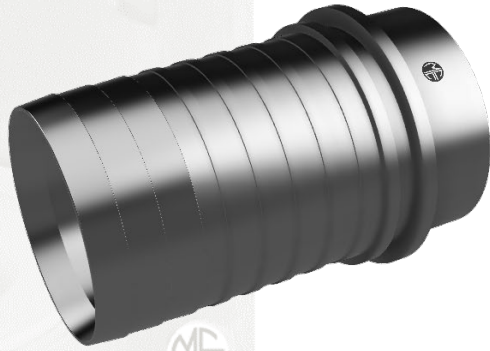




5 Myer Court | Beverley  
 South Australia | 5009  
 1300 853 250  
[www.mcc-ltd.com.au](http://www.mcc-ltd.com.au)  
[info@mcc-ltd.com.au](mailto:info@mcc-ltd.com.au)

## Butt-weld External Crimp Hose Tails



### SPECIFICATION

Stainless steel tube weld external crimp hose tail fitting for the food industry and other hygienic applications. Tube weld physical dimensions in accordance with AS 1528.1

### MATERIAL

AISI 316/316L Austenitic Stainless Steel

### DIMENSIONAL & SERVICE RATING

Tube OD (mm)	Part #	"A"	"B"	"C"	"L"	WT	Weight (kg)
25.4	1BWSECR	25.4	25.8	29	65	1.6	0.07
38.1	15BWSECR	38.1	38.5	42	76	1.6	0.18
50.8	2BWSECR	50.8	51.2	55	90	1.6	0.36
63.5	25BWSECR	63.5	63.9	68	90	1.6	0.37
76.2	3BWSECR	76.2	76.5	84	100	1.6	0.53
101.6	4BWSECR	101.6	102.0	109	107	1.6	0.73

### SURFACE FINISH

Ra 0.8µm or finer on wetted areas including contact and sealing surfaces, Ra 1.6µm or finer on non-wetted areas.

### MANUFACTURER'S CERTIFICATE

Material Certificate to BS EN 10204 3.1 available upon request at time of order.

