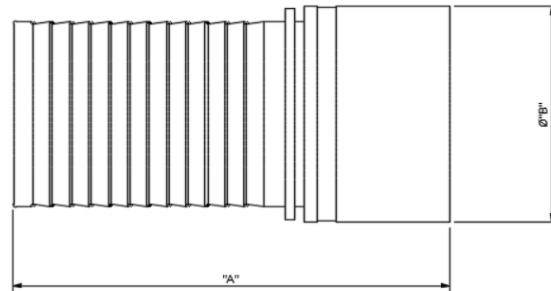
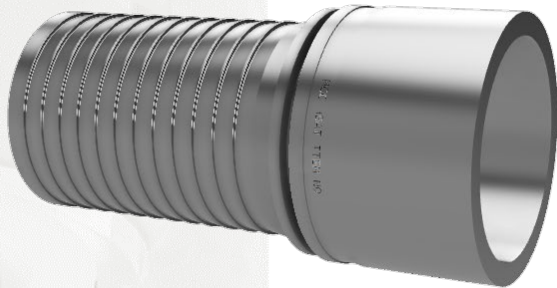




5 Myer Court | Beverley
 South Australia | 5009
 1300 853 250
 www.mcc-ltd.com.au
 info@mcc-ltd.com.au

External Crimp Plain End Hose Tail



SPECIFICATION

External Crimp Style Plain End Hosetail c/w EN10204 3.1 Material Certification

MATERIAL

Grade ASTM 316L/1.4404 Seamless Tube or Hollow Bored Bar

DIMENSIONAL & SERVICE RATING

NPS (DN)	Part #	"B" (mm)	"A" (mm)	Crimp	End	Service Rating (Bar)	Weight (kg)
20	75PESECR-S	26.9	78	Yes	Plain	20	0.14
25	1PESECR-S	33.4	86	Yes	Plain	20	0.22
32	125PESECR-S	42.2		Yes	Plain	20	
40	15PESECR-S	48.3	104	Yes	Plain	20	0.43
50	2PESECR-S	60.3	128	Yes	Plain	20	0.68
65	25PESECR-S	73.0		Yes	Plain	20	
80	3PESECR-S	88.9	180	Yes	Plain	20	1.93
100	4PESECR-S	114.3	185	Yes	Plain	20	3.07
150	6PESECR-S	168.3	255	Yes	Plain	20	6.51

SURFACE FINISH

Natural

MARKINGS

MCC HHHHH XXXXX

HHHHH = Heat Number

XXXXX = Item Number

MANUFACTURER'S CERTIFICATE

Certificate to BS EN 10204 3.1 available upon request at time of order.

