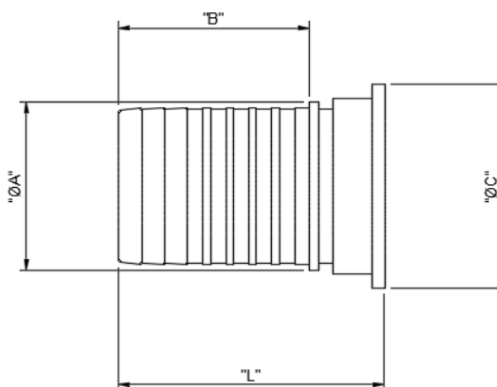




5 Myer Court | Beverley
 South Australia | 5009
 1300 853 250
 www.mcc-ltd.com.au
 info@mcc-ltd.com.au

RJT (BSM) External Crimp Hose Tail



SPECIFICATION

BS 4825-3 Stainless steel hose fitting for the food industry and other hygienic applications – Part 3: Specification for clamp type couplings

MATERIAL

AISI 316/316L Austenitic Stainless Steel

DIMENSIONAL & SERVICE RATING

Tube OD (mm)	Part #**	"A"	"B"	"C"	"L"	Service Rating (PSI)	Weight (kg)
25.4	1RJTFSECR	29	34	41.3	55	145	0.25
38.1	15RJTFSECR	38	50	54.0	74	145	0.43
50.8	2RJTFSECR	50	63	66.7	87	145	0.41
63.5	25RJTFSECR	63	58	79.4	84	145	0.7
76.2	3RJTFSECR	76	72	92.1	95	145	1.02
101.6	4RJTFSECR	109	70	117.5	98	145	1.45

**Note: Add -N to part number for nut & tail assembly

SURFACE FINISH

Ra 0.8µm or finer on wetted areas including contact and sealing surfaces, Ra 1.6µm or finer on non-wetted areas.

HEX NUT

Hex Nut sold separately is configured with basic Whitworth thread form specified in BS 84. Screw threads shall comply with thread dimensions shown in Figure 10 and Table 8 of BS 4825:5

MANUFACTURER'S CERTIFICATE

Material Certificate to BS EN 10204 3.1 available upon request at time of order

