

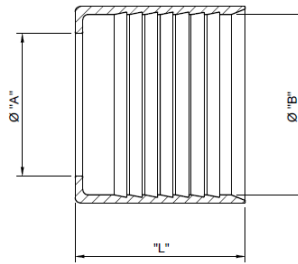
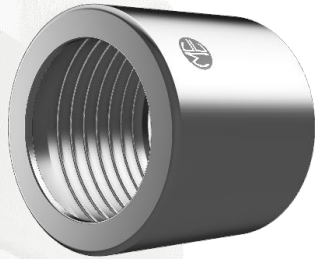
MILLENNIUM COUPLING COMPANY

"We work under pressure!"



5 Myer Court | Beverley
 South Australia | 5009
 1300 853 250
www.mcc-ltd.com.au
info@mcc-ltd.com.au

Hygienic Stainless Steel 304 Ferrules



SPECIFICATION

Millennium proprietary profile designed to suit MCC Hygienic Crimp Stems.

MATERIAL

AISI 304/304L Austenitic Stainless Steel, Ra 1.6µm or finer. Material Certificate to BS EN 10204 3.1 available upon request at time of order

DIMENSIONAL & SERVICE RATING

Hose ID (mm)	Part #	"A"	"B"	Hose OD	"L"	WP (PSI)	Weight (kg)
12.5	50SFC21	16.3	23	21-22.5	38	300	0.07
12.5	50SFC23	16.3	25	23-24.5	38	300	0.08
19.1	75SFC29	23.5	31	29-30.5	38	300	0.09
19.1	75SFC31	23.5	33	31-32.5	38	300	0.10
25.4	1SFC35	29.5	37	35-36.5	38	300	0.12
25.4	1SFC37	29.5	39	37-38.5	38	300	0.12
25.4	1SFC39	29.5	41	39-40.5	38	300	0.13
25.4	1SFC41	29.5	43	41-42.5	38	300	0.14
31.8	125SFC43	36.5	45	43-44.5	45	300	0.16
31.8	125SFC45	36.5	47	45-46.5	45	300	0.17
31.8	125SFC47	36.5	49	47-48.5	45	300	0.18
38.1	15SFC47	42.5	49	47-48.5	52	300	0.20
38.1	15SFC49	42.5	51	49-50.5	52	300	0.20
38.1	15SFC51	42.5	53	51-52.5	52	300	0.22
38.1	15SFC53	42.5	55	53-54.5	52	300	0.22
38.1	15SFC55	42.5	57	55-56.5	52	300	0.24
50.8	2SFC63	55.3	66	63-64.5	66	300	0.31
50.8	2SFC65	55.3	68	65-66.5	66	300	0.33
50.8	2SFC67	55.3	69.5	67-68.5	66	300	0.36
50.8	2SFC69	55.3	71.8	69-70.5	66	300	0.33
63.5	25SFC75	69	77	75-76.5	62	300	0.34
63.5	25SFC77	69	79	77-78.5	62	300	0.36
63.5	25SFC79	69	81	79-80.5	62	300	0.38
63.5	25SFC81	69	83	81-82.5	62	300	0.38
63.5	25SFC83	69	85	83-84.5	62	300	0.38
76.2	3SFC88	84	91	88-90	75	300	0.57
76.2	3SFC91	84	93	90.5-92.5	75	300	0.55
76.2	3SFC93	84	95	93-95	75	300	0.58
76.2	3SFC96	84	98	95.5-97.5	75	300	0.57
76.2	3SFC99	84	101	98-100	75	300	0.55
101.6	4SFC116	109.5	119	116-118.5	76	300	1.38
101.6	4SFC119	109.5	122	119-121.5	76	300	1.23
101.6	4SFC122	109.5	125	122-124.5	76	300	1.38
101.6	4SFC125	109.5	128	125-127.5	76	300	1.37
101.6	4SFC128	109.5	131	128-130.5	76	300	1.23

