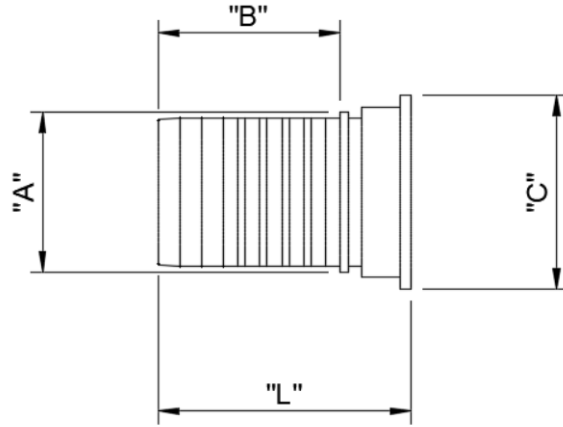
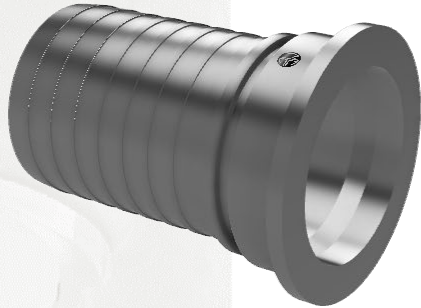




5 Myer Court | Beverley  
 South Australia | 5009  
 1300 853 250  
[www.mcc-ltd.com.au](http://www.mcc-ltd.com.au)  
[info@mcc-ltd.com.au](mailto:info@mcc-ltd.com.au)

## CIP RJT (BSM) External Crimp Hose Tails



### SPECIFICATION

Flat Face Clean in place (CIP) BS 4825-5 Stainless steel hose fitting for the food industry and other hygienic applications – Part 5: Specification for recessed ring joint type couplings.

### MATERIAL

AISI 316/316L Austenitic Stainless Steel

### DIMENSIONAL & SERVICE RATING

Hose ID (mm)	Part #**	"A"	"B"	"C"	"L"	Service Rating (PSI)	Weight (kg)
25.4	1CRJTFSECR	29	34	41.3	55	145	0.26
38.1	15CRJTFSECR	42	50	54.0	74	145	0.28
50.8	2CRJTFSECR	55	63	66.7	87	145	0.43
63.5	25CRJTFSECR	68	58	79.4	84	145	0.43
76.2	3CRJTFSECR	84	72	92.1	95	145	0.62
101.6	4CRJTFSECR	109	70	117.5	98	145	0.95

\*\*Note: Add -N to part number for nut & tail assembly

### SURFACE FINISH

Ra 0.8µm or finer on wetted areas including contact and sealing surfaces, Ra 1.6µm or finer on non-wetted areas.

### HEX NUT

Hex Nut sold separately is configured with basic Whitworth thread form specified in BS 84. Screw threads shall comply with thread dimensions shown in Figure 10 and Table 8 of BS 4825:5

### MANUFACTURER'S CERTIFICATE

Material Certificate to BS EN 10204 3.1 available upon request at time of order.

