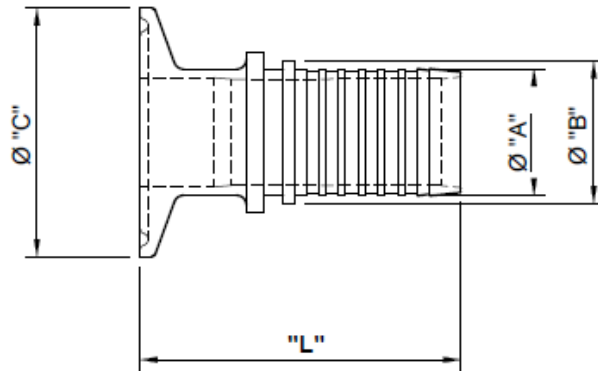
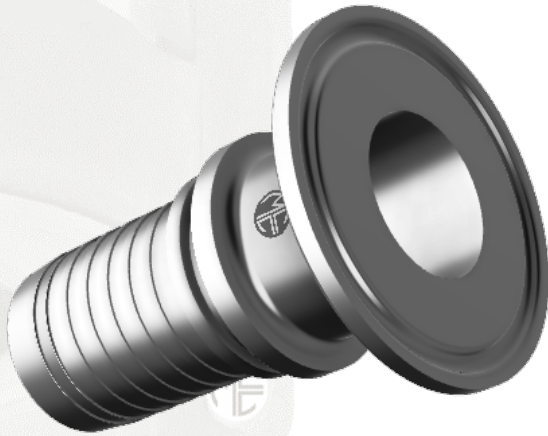




5 Myer Court | Beverley
 South Australia | 5009
 1300 853 250
www.mcc-ltd.com.au
info@mcc-ltd.com.au

Tri-Clamp External Crimp Hose Tails



SPECIFICATION

BS 4825-3 Stainless steel tubes and fittings for the food industry and other hygienic applications – Part 3: Specification for clamp type couplings

MATERIAL

AISI 316/316L Austenitic Stainless Steel

DIMENSIONAL & SERVICE RATING

Tube OD (mm)	Part #	"A"	"B"	"C"	"L"	Service Rating (PSI)	Weight (kg)
25.4	1TCSECR	25.4	29	50.5	65	500	0.18
38.1	15TCX50SECR	12.9	16	50.5	62	500	0.13
38.1	15TCX75SECR	19.8	23	50.5	65	500	0.18
38.1	15TCSECR	38.1	42	50.5	76	500	0.22
50.8	2TCSECR	50.8	55	64	96	450	0.42
63.5	25TCSECR	63.5	68	77.5	90	400	0.42
76.2	3TCSECR	76.2	84	91	100	350	0.50
101.6	4TCSECR	101.6	109	119	107	300	1.11

SURFACE FINISH

Ra 0.8µm or finer on wetted areas including contact and sealing surfaces, Ra 1.6µm or finer on non-wetted areas.

MANUFACTURER'S CERTIFICATE

Material Certificate to BS EN 10204 3.1 available upon request at time of order.

