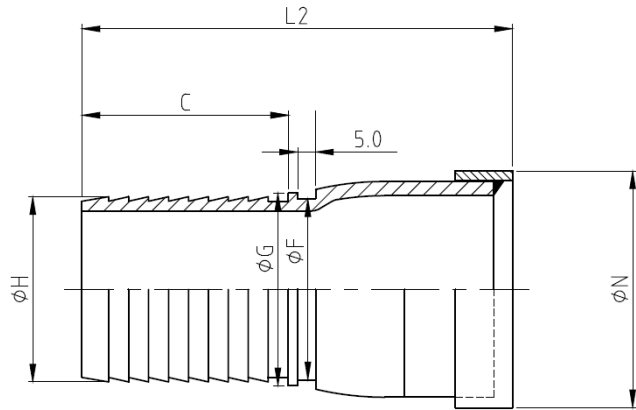
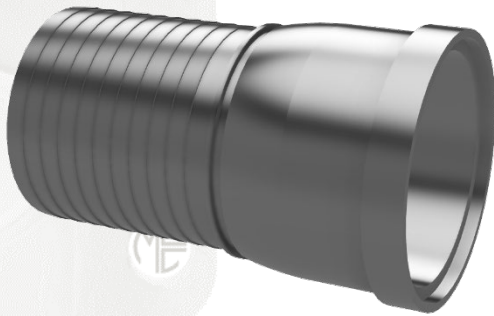




Shouldered KC Crimp Hose Tail



SPECIFICATION

Shouldered KC Crimp Carbon Steel Hose Tail

MATERIAL

Equivalent to ASTM A53 Sch40 Carbon Steel

DIMENSIONAL & SERVICE RATING

NPS (DN)	Part #	"L2" (mm)	"H" (mm)	"N" (mm)	"C" (mm)	"F" (mm)	Weight (kg)
100	KCC400SHLD	194.45	103	122	103	101.6	2.8

SURFACE FINISH

Zinc Plated

KEY FEATURES

- Machined multi-barbed hose shank for improved hose retention
- The hose tail contains a raised collar to allow crimp ferrules to engage and help prevent premature failure.
- The hose tail is made from ASTM A53 Zinc Plated Sch40 Carbon Steel
- Zinc plating reduces corrosion
- Not intended for use with grooved or plain end couplings
- To be installed with Victaulic Style clamps

WORKING PRESSURE

Working Pressure is dictated by the coupling

