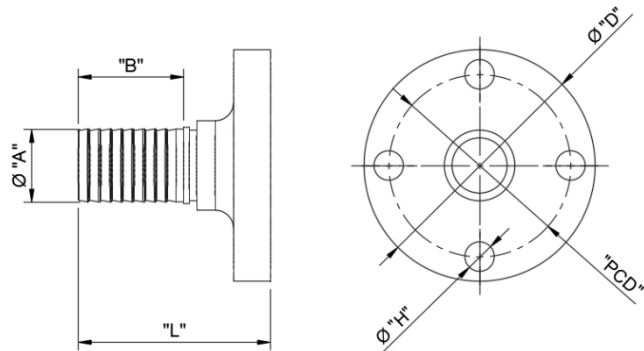
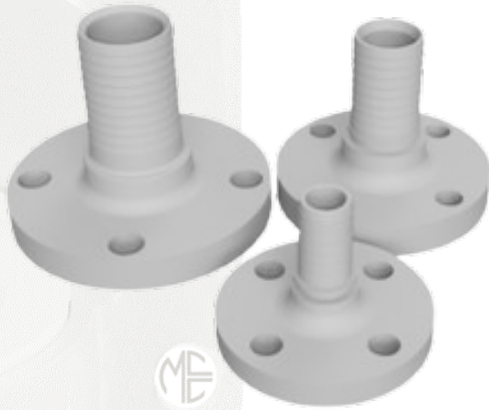




MCC Polypropylene Flanged CL150 Hose tails

5 Myer Court | Beverley
 South Australia | 5009
 1300 853 250
www.mcc-ltd.com.au
info@mcc-ltd.com.au



SPECIFICATION

This specification defines the technical and performance requirements for the MCC range of Polypropylene Flanged Hose tails. Designed specifically for the Chemical Processing Industry the MCC Flanged Hose tail exhibits high stiffness, excellent chemical resistance and inherent flame-retardant characteristics.

Machined from solid Polypropylene, the one-piece design eliminates the need for threaded connections minimising the possibility of leak paths.

Flanges are machined to integrate with ASME B16.5 CL150 pattern and are machined flat faced. It is recommended that the adjoining flange is also flat face design to eliminate deformation when tightening.

MATERIAL

Polypropylene (PP)

DIMENSIONAL & SERVICE RATING

Part No	Working Pressure (psig)	"A" mm	"B" mm	"L" mm	"D" mm	"PCD" mm	"H" mm	Weight (kgs)
PP100FA	150	26	44	81	110	79.4	15.9	0.14
PP150FA	150	39	64	104	125	98.4	15.9	0.24
PP200FA	150	51	78	118	150	120.7	19.1	0.34

TEMPERATURE RATING

Service temperature 0 – 100 degrees Celcius

